



St. Peter the Apostle

"...to encounter the face of Jesus Christ"

11000 SOUTHWEST BLVD. | WICHITA, KS 67215



November 9, 2025

TAKE
THESE OUT
OF HERE.

JOHN 2:16

THE DEDICATION OF THE LATERAN BASILICA

©LPI

Rev. Curtis Hecker, Parish Pastor

Emerg. Line | 316-816-2234

Email | frhecker@stpeterschulte.com

Parish Office

Phone | 316.522.4728

Hours.....Mon-Fri 9am-4pm

Vicki Richuber, Business Manager

.....bookkeeper@stpeterschulte.com

Saige MacKay, Stewardship Coordinator

.....stewardship@stpeterschulte.com

Annabelle Bina, Youth Director

.....youthdirector@stpeterschulte.com

Stephanie Scriven, Parish Office

.....psecretary@stpeterschulte.com

St. Peter Catholic School

Phone | 316.524.6585

Email | school@stpeterschulte.com

Brenda Hickok, Principal

Kelly Gerstenkorn, School Secretary

Mass Schedule

Weekend Mass

Saturday.....Vigil 4pm

Sunday.....8am & 10:30am

Daily Mass

Tues, Wed, Thurs, Fri.....8am

First Saturday.....8am

Holy Days (Check the Bulletin)

First Friday Devotions.....after 8am Mass

Reconciliation

Weekday Confessions will begin 30 mins prior to Mass.

Saturday - 3-3:45pm

Sunday- 7:30am and 10am

Sacraments

Baptisms: Parents must meet with the Pastor prior to Baptism. To schedule an appointment call the Parish Office.

Marriages: Nine months notice to pastor, as well as must be a registered & participating member.

Eucharist Adoration:

Opening(s): Monday 5pm,
Thursday 11pm, Friday 11am, and
Noon (shared)

For more info call or text Heather
Welch 316-706-2128 or
hwelch2334@gmail.com



THE EAGLE'S NEST



Eagles will begin the week with their monthly stewardship activity on Monday morning, helping to clean floors and windows, pick up trash around the school, and tidy up pews in the church. On Tuesday evening at 6:00pm, the school is hosting Family Night. Students and their families will play various games and activities working their way to the end of the "Yellow Brick Road". Have a wonderful week!

PARISH SCHEDULE

Mon 11.10.2025: 10am Harvest House; 3:30pm Little Flowers; 7pm Boy Scouts

Tues 11.11.2025: 8am Mass; 9am MOYC; 6pm Girl Scouts; 6:30pm Pitch Night; 7pm Boy Scouts

Wed 11.12.2025: 8am Mass; 7pm SVdP; 7pm OCIA Class; 7pm CYM; 7pm Choir practice; 7pm PSR

Thurs 11.13.2025: 8am Mass; 9am Chair Exercise Class; 8pm KofC (Schulte)

Fri 11.14.2025: 8am Mass; 9am ENDOW

Sat 11.15.2025: 4pm Mass

Sun 11.16.2025: 8am Mass; 10:30am Mass

CYM -

November 12, 2025
ABC Night. Meet in Dominic
Hall at 7pm.
All 9th-12th graders are
invited.



ST. PETER THE APOSTLE ADVENT BOOK STUDY

JOIN US IN PREPARING FOR
THE BIRTH OF JESUS WITH AN
ADVENT BOOK STUDY.
USE THE QR CODE TO
REGISTER FOR THIS CLASS.
REGISTRATION ENDS NOV 23.



THIS BOOK OFFERS A
DAILY REFLECTION
AND QUESTIONS TO
FOLLOW ALONG
EACH DAY IN
ADVENT!



Parish Information Meeting

All parishioners are invited
and encouraged to attend one
of these meetings.

If you have children attending
St. Peter or Bishop Carroll,
and all Bishop Carroll
students are required to
attend one of these meetings.

Come hear about
Father Curtis' vision
of our parish future
and the
expectations of our
booming parish
family.

7:15 PM
School Cafeteria
Tuesday - November 18 or
Wednesday - November 19

Monday, November 10 at 10am in
Dominic Hall.

Join us for a morning of fun,
fellowship, and food!
We'll start with a short meeting,
enjoy a presentation by Ken
Grommet, Security Advisor and
finish with a Pre-Thanksgiving
Potluck.
Smoked Turkey provided-please
bring a side or dessert that will
complement the meal.



Zelie's Flowers

If you have lost a baby due to miscarriage or stillbirth, please call the parish office at 316.522.4728 and someone will reach out to you. Packets with information and support are in both the back of the church and the adoration chapel. Use the QR to find additional helpful resources.

Chair Exercise Class: Mon and Thurs Mornings at 9am in Dominic Hall (excluding the second Monday of the month-watch the parish calendar via the website). No requirements, No fees, No skills /experience necessary.

Textron Employees: Textron and the Catholic Diocese of Wichita has reinitiated their Gift Matching program. If you work for Textron and are interested in having Textron match a donation gift please visit <https://supportforcatholicsschools.org/>

SCRIP Giftcards: Take advantage of this program and help our Parish just by purchasing giftcards to the stores you already shop. Order form available in the gathering space after Masses or the parish website (under Latest News-RaiseRight)

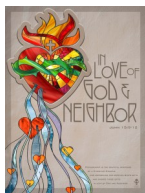
Prayer Line: To submit prayer requests to our Prayer Line, email Jolene Becker at jolenebecker87@icloud.com or 316-619-2220

FORMED: If you have not tried FORMED yet please use the Parish's subscription, FREE to you. Create a sign-in and get started. Call the Parish Office if you have any questions.



If you want to receive Flocknotes Text from the parish, text StPeterSchulte at 84576.

November 9, 2025



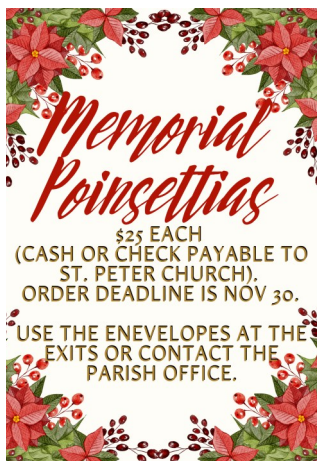
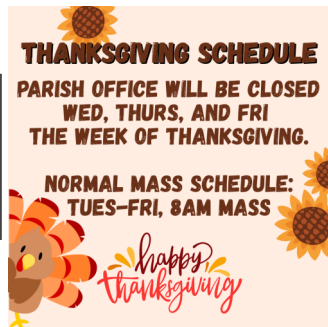
STEWARDSHIP RENEWAL
Stewardship forms are due back Nov 23, 2025. There is a new online version this year! You can find everything you need on our website, stpeterschute.com. We need forms from EVERY family. Thanks for your cooperation.

STEWARDSHIP FORMS RETURNED:



LEADERS NEEDED: If interesting in helping lead and/or answer questions for one of these ministries, contact the Parish Office for additional information.

Ladies Night | Hooked on Theology | Altar Servers



CAMPAIGN CORNER

Parish Leadership continues to work on the church renovation project and plans for a parish hall. Details will be announced in the upcoming months as we gather more information on these plans. In addition, the fire hydrants continues to make progress with a projected start date in mid-2026.

For parishioners who would like to make gifts to the campaign in 2025, this can still be done even though the campaign has been delayed until spring of 2026. A fund has been set up for these gifts and will be included in the campaign totals. Funds will be set aside specifically for the identified campaign projects and invested until they are needed. Gifts may be cash, check or credit card; appreciated assets to include stocks, bonds; commodities or personal property, real estate, life insurance, or IRA distributions. Please be sure to mark your gift *Living Stones Campaign* so we can add it to the correct fund. Please contact the office if you have questions on options to make a gift.

We greatly appreciate your continued support as we all work to enhance our parish for our current parish members and future generations to come. Together we will make it happen!

October 2025 Living Stones Givings.....\$40,166.00

Thank you to everyone for their prayers, cards and visits during Mike's healing.

-Mike and Glenda Conover

AROUND THE DIOCESE

March for Life: Join Bishop Kemme in Washington DC! January 20-25th, 2026. If interested in attending the March for Life, please contact the Respect Life Social Justice Office for availability at 316-269-3935 or m4linfo@catholicdioceseofwichita.org.

Some partial scholarships are available – contact the office for details. Register online at: <https://thevine.leadlms.com/register/group/190>

Save the Date, BINGO: Mark your calendars for Sat, Feb 28, 2026. 6-9pm. Join for a Spring Picnic themed BINGO Fundraiser supporting the Pure & Simple Truth for Youth mission of empowering this generations youth with the truth about identity, healthy relationships, and sexual integrity. Early bird registration begins, January 1, 2026, www.pst4y.org

Catholic Charities: Help fill Santa's workshop! As you shop this season. Remember the families staying at Harbor House and St. Anthony Family Shelter. Donate Online: bit.ly/CatholicCharitiesWishlist or bit.ly/ChristmasatCCW2025

St. Joseph (Millwood) Craft Fair: St. Joseph Altar Society is hosting a Craft Fair on Nov 15, 9a-4p. Hand crafted quilt raffle, collectibles, food and more.

NFP: Contact the Catholic Diocese at 316-685-5240 Or find available classes at: www.catholicdioceseofwichita.org/mfl/nfp

Victim Assistance Coordinator | P: (316) 440-1757
Catholic Diocese of Wichita / 424 N. Broadway, Wichita KS 67202

Garden Plain State Bank
10526 W. Maple • Wichita, KS
721-1500
voice access: 462-1300
www.gpsbank.com


Downing & Lahey
MORTUARY • CREMATORY
10515 W Maple • 721-4551 • www.dlwichita.com
• Serving the Wichita Community Since 1913 •

WEBB-SHINKLE MORTUARY
Local Family Owned
Clearwater and Haysville
620.584.2244
www.wsmortuary.com

Juwetta Slano
REALTOR®
Call 316-519-7235
to Buy or Sell your Home!
BERKSHIRE HATHAWAY HOMESERVICES
PENFedRAITY



Sanitary Sewers • Septic Systems • Gas/Water Lines



INSURED
1919 S.W. Blvd. • Wichita, KS 67213 • (316) 945-7227 • Fax (316) 945-7799

BONDED

ADT-Monitored Home Security
Get 24-Hour Protection From a Name You Can Trust

- Burglary
- Fire Safety
- Flood Detection
- Carbon Monoxide

633-287-3502

Services Provided:
Lawn Fertilizing • Seeding
Bagworm Spray
Duke and Jen Meyers
Members of St. Peter Parish
(316) 721-7811 • jen@dukeslawn.com

D&D
EQUIP. SALES & RENTALS
4800 S WEST ST. • 316.522.6272 • WICHITA, KANSAS

Star
Lumber & Supply
Maple & West Street
316.942.2221
Greenwich & K96
316.636.2800

Members of:
Christ the King,
SEAS,
St. Francis &
St. Catherine

Lumber • Flooring • Windows • Decks • Doors • Cabinets • Siding

Sassy Nails Salon & Spa
316.721.6245 /SassyNailsWest
13301 W Maple St. Ste 125 • Wichita, KS 67226
Mon - Sat 9:30AM - 7PM Sun 12PM - 5PM
Gift Certificate Available • Walk-ins Welcome

B&B LUMBER
Cedar Fence • Lumber
Hardware • Cabinets
Across the street from St. Peter's
10808 W. MacArthur Road
522-1522

WR WIESEN ROOFING
ROOFING • WATERPROOFING • GUTTERS & LANDSCAPING
Brad Wiesen - Owner
503 N. Wheatland Pl. • Wichita
(316) 806-2106 • www.wiesensroofing.com

SUPPORT OUR ADVERTISERS!

Patrick's Plumbing Service LLC
316-779-6869
"You Need Help? - Call Patrick NOW.
Fast, Affordable, Dependable."

**DR. JARED REICHENBERGER
DR. LISA METZEN**
EAGLE RIDGE DENTAL
10243 W. 21st St N., Ste. 101
Wichita, KS 67205
(316) 295-2858
office@eagleridgedental.com
www.EagleRidgeDental.com

Get suprisingly
great Home &
Auto Rates
State Farm

Jim Morgan
13303 W. Maple Street
Wichita, KS 67226
(316) 721-5769
jim@morgansupply.com
State Farm
Bloomington, IL 61820

You know I'm always here with
Good Neighbor service. But I'm
also here with suprisingly great
rates for anyone. Call me for a
quote to see how much you can
save. You might be supried.
Like a good neighbor,
State Farm is there.™

HEARTLAND VETERINARY SERVICES, INC.
Oval Farmstead, DVM • Elizabeth Alvey, DVM
Greg Seiler, DVM • Sherron Davis, DVM
2800 N. 2475 West, Andale, KS
316-444-2377
SMALL ANIMAL • EQUINE
DAIRY & BEEF CATTLE •
MEDICINE & SURGERY

bpt BRIGHAM
PHYSICAL THERAPY
Kelsie Brigham
316-866-7067
1443 N Ridge Rd, Wichita

DAVID LIES PLUMBING INC.
945-0117

Harry Street Carpet, LLC
FAMILY OWNED & OPERATED SINCE 1950
RESIDENTIAL • COMMERCIAL
211 WEST HARRY • WICHITA, KS 67213
PH: (316) 262-7715

LET'S GROW YOUR BUSINESS
Place Your Ad Here
and Support Our Parish!
CONTACT ME Tim NeSmith
tnesmith@4LPi.com • (800) 950-9952 x5863

LEGACY Bank
Member FDIC
PERSONAL LOANS
Katie Haffner
Kim Egner
www.legacy.bank/applynow 316.266.3711

D&S Body Shop
Owner: Steve Stonehocker
Body and Paint Repair
Restoration of old and vintage cars.
1014 N. 1635 Ave. H. • Garretts • 620.584.2479

Don't just dream it, SEE IT
PHOENIX SUPPLY INC.
Kitchen & Bath Showroom
262-7241 • phoenixsupplyinc.com

Place Your Ad Here and
Support our Parish!
Instantly create and
purchase an ad with
AD CREATOR STUDIO
4lpi.com/adcreator



OPEN SUNDAYS
11200 W.
KELLOGG
722-7516
Ext. 7852
Brady Nursery
LANDSCAPING WITH A PLAN
www.brady-nursery.com

Let us be family
FAMILY HEALTH & REHAB
For your short stay rehab or long term care
Improving Lives. Exceeding Expectations
639 South Maize Road Court, Wichita, KS • Phone: 316.425.5600

IF YOU LIVE ALONE
MDMedAlert!™ As Low As \$19.95/mo.
✓ Ambulance/Police
✓ Family/Friends
✓ GPS & Fall Alert
CALL NOW 800.808.9294
www.mdmalert.com

WEIGAND
Stephanie Carlson, Realtor®
316.650.3797
scarleen@weigand.com

MEDICARE MEDIC JIM ZUPERKU
Parishioner
Specializing in
All Medicare Choices
Free Analysis
PHONE 316-773-1220
CELL 316-253-7340
jzuperku@gmail.com
www.medicarekansas.com

mary kate AND COMPANY
721-4101
HAIR SALON

BRAND PLUMBING, INC
Residential • Commercial • Repair
316-942-2306
www.brandplumbinginc.com
Lic # 540 184 2100

CENTRAL GAS SERVICE
Serving Sedgewick County Since 1960
P.O. Box 201, Garden Plain
Chase Lehner 316-772-3783
centralgasservice@outlook.com

Lubbers
The Friendly Way to Buy!
LubbersCars.com 800.LUBBERS 540.0011 Cheney, KS

kw Whole Entrepreneurs Thrive
JOSH BLANDING
EMAIL: jblanding@kw.com
PHONE: 316.218.2955
OFFICE PHONE: 316.681.360
WEBSITE: jblanding.kw.com

kw SIGNATURE PARTNERS
RELLER/LLP/PS/RE/ATY

GODDARD VETERINARY CLINIC
SMALL ANIMALS MEDICINE
& SURGERY • BOARDING
JOSHUA ALBERT, D.V.M. • BILLY KOSTER, D.V.M.
10912 W. KELLOGG DR. GODDARD, KS 67052
(316) 794-8022

NORDHUS DENTISTRY
Byron J. Nordhus, D.D.S.
721-6730
No Dental Insurance? No Problem!
View our membership plan at
www.nordhusdentistry.com

Edgar Jones
Joe Metzger • Planning for Retirees
Financial Advisor • College Savings
Parishioner • Business Retirement Plans
316-722-1041
305 S. Main Street • Wichita, KS 67202
www.edgarjones.com/joe-metzger