

# St. Peter the Apostle

*"...to encounter the face of Jesus Christ"*

11000 SOUTHWEST BLVD. | WICHITA, KS 67215

November 30, 2025

YOU ALSO  
MUST BE  
**PREPARED.**

— MATTHEW 24:44 —

FIRST SUNDAY OF ADVENT

**Rev. Curtis Hecker, Parish Pastor**  
Emerg. Line | 316-816-2234  
Email | [frhecker@stpeterschulte.com](mailto:frhecker@stpeterschulte.com)

#### Parish Office

Phone | 316.522.4728

Hours.....Mon-Fri 9am-4pm

**Vicki Richuber, Business Manager**  
.....[bookkeeper@stpeterschulte.com](mailto:bookkeeper@stpeterschulte.com)

**Saige MacKay, Stewardship Coordinator**  
.....[stewardship@stpeterschulte.com](mailto:stewardship@stpeterschulte.com)

**Annabelle Bina, Youth Director**  
.....[youthdirector@stpeterschulte.com](mailto:youthdirector@stpeterschulte.com)

**Stephanie Scriven, Parish Office**  
.....[psecretary@stpeterschulte.com](mailto:psecretary@stpeterschulte.com)

#### St. Peter Catholic School

Phone | 316.524.6585

Email | [school@stpeterschulte.com](mailto:school@stpeterschulte.com)

**Brenda Hickok, Principal**

**Kelly Gerstenkorn, School Secretary**

#### Mass Schedule

Weekend Mass

Saturday.....Vigil 4pm

Sunday.....8am & 10:30am

Daily Mass

Tues, Wed, Thurs, Fri.....8am

First Saturday.....8am

Holy Days (Check the Bulletin)

First Friday Devotions.....after 8am Mass

#### Reconciliation

Weekday Confessions will begin 30 mins prior to Mass.

Saturday - 3-3:45pm

Sunday- 7:30am and 10am

#### Sacraments

**Baptisms:** Parents must meet with the Pastor prior to Baptism.  
To schedule an appointment call the Parish Office.

**Marriages:** Nine months notice to pastor, as well as must be a registered & participating member.

©LPI

## Eucharist Adoration:

Opening(s): Monday Noon (share),  
Thursday 11pm.

For more info call or text Heather  
Welch 316-706-2128 or  
hwelch2334@gmail.com



## THE EAGLE'S NEST



Welcome back Eagles! This week starts us off in December and we begin Monday morning with S.O.A.R Awards. On Tuesday afternoon, students will go to Collegiate for the Scholars Bowl at 4:00pm. On Friday, all 2nd Grade students will do their Christmas Paint the Towne Field Trip to kickoff the holiday season. Have a great week!



## Advent Activity Night


December 3, 2025  
Dominic Hall 7:00-8:30



### The Lord's Diner Volunteers


We are still need of a few volunteers for Christmas (Dec 25) Evening.

If you can help, contact  
Carol Siegrist,  
316-253-6967



## HOOKED on THEOLOGY

Sunday,  
November 30,  
2025  
@ 7pm  
in the  
school  
cafeteria



### ST. PETER CATHOLIC SCHOOL THE LORD'S DINER CHRISTMAS PROJECT

ITEMS NEEDED:

- Fun Sized Candy Bar
- Gloves
- Slim Jims
- Granola Bars
- Individual Bags of Chips
- Hand Warmers
- Little Debbie Snack
- Peanut Butter or Cheese Crackers

**THE LORD'S DINER**  
Deadline for items is  
December 15.  
Items



## Zelig's Flowers

If you have lost a baby due to miscarriage or stillbirth, please call the parish office at 316.522.4728 and someone will reach out to you. Packets with information and support are in both the back of the church and the adoration chapel. Use the QR to find additional helpful resources.

## PARISH SCHEDULE

Mon 12.1.2025: 9am Chair Exercise Class; 3:30pm Little Flowers

Tues 12.2.2025: 8am Mass; 9am MOYC; 7pm Peace Womens Group

Wed 12.3.2025: 8am Mass; 6pm Cub Scouts; 7pm CYM; 7pm OCIA Class; 7pm PSR; 7pm Choir practice

Thurs 12.4.2025: 8am Mass; 9am Chair Exercise Class; 6:15pm KofC Rosary for the Unborn

Fri 12.5.2025: 8am Mass; 9am EN-DOW

Sat 12.6.2025: 8am Mass; 4pm Mass

Sun 12.7.2025: 8am Mass; 10:30am Mass; 6pm Parish Tailgate

**Chair Exercise Class:** Mon and Thurs Mornings at 9am in Dominic Hall (excluding the second Monday of the month-watch the parish calendar via the website). No requirements, No fees, No skills /experience necessary.

**Textron Employees:** Textron and the Catholic Diocese of Wichita has reinitiated their Gift Matching program. If you work for Textron and are interested in having Textron match a donation gift please visit <https://supportforcatholicschools.org/>

**SCRIP Giftcards:** Take advantage of this program and help our Parish just by purchasing giftcards to the stores you already shop. Order form available in the gathering space after Masses or the parish website (under Latest News-RaiseRight)

**Prayer Line:** To submit prayer requests to our Prayer Line, email Jolene Becker at [jolenebecker87@icloud.com](mailto:jolenebecker87@icloud.com) or 316-619-2220

**FORMED:** If you have not tried FORMED yet please use the Parish's subscription, FREE to you . Create a sign-in and get started. Call the Parish Office if you have any questions. Parish Code: 8JKP2P



If you want to receive Flocknotes Text from the parish, text StPeterSchulte at 84576.

**November 30, 2025**

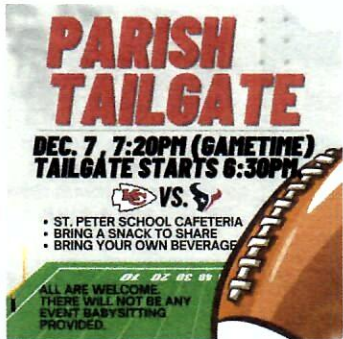


## STEWARDSHIP RENEWAL

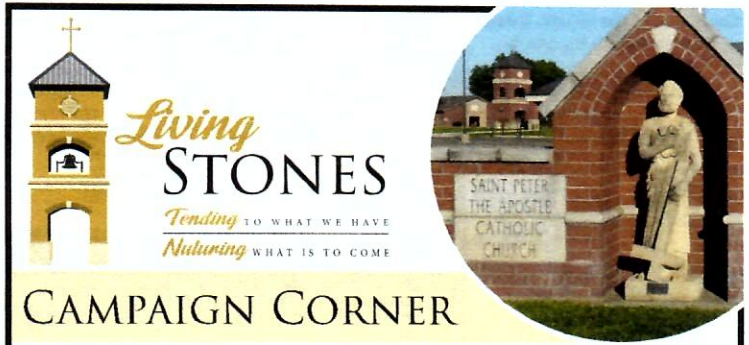
Thank you to everybody that completed and returned their Stewardship Renewal Packet. Annually updated forms are a tremendous help in the office.

STEWARDSHIP FORMS RETURNED: 37

If you have not returned your renewal forms yet we invite you to do so. There is an online option through our website. Or you can print forms through the website as well. Contact the Parish Office if you have any question.



**Harvest House:** Monday, Dec 8—10am, Dominic Hall. Bring a \$10 wrapped gift to take part in our fun gift exchange! Sloppy Joes provided—please bring a side, appetizer, or dessert to share. We hope you'll come celebrate the season with us!



## CAMPAIGN CORNER

Living Stones Capital Campaign  
Tending to What we Have...Nurturing What is to Come

This time of year, many are working on their finances and tax planning. We hope you are considering St. Peter and our parish projects in your year-end giving. For parishioners who had intended to make gifts to the campaign in 2025, this can still be done even though the campaign has been delayed until spring of 2026. A fund has been set up for our capital campaign, and any gifts designated for it will be counted towards your commitment and the project.

There are many ways to make a gift to the capital campaign. Gifts may be cash, check or credit card; appreciated assets to include stocks and bonds; commodities, personal property, real estate, life insurance, or IRA distributions. IRA distributions can provide additional tax benefits. Please mark your gift *Living Stones* campaign so it will be added to the correct fund. If you have questions on this, or other giving options, please contact the parish office.

We greatly appreciate your continued support as we give glory to God by enhancing our parish and growing in our Catholic faith. Together we will make this happen!

October 2025 Living Stones Givings.....\$40,166.00

## AROUND THE DIOCESE

**March for Life:** Join Bishop Kemme in Washington DC! January 20-25th, 2026. If interested in attending the March for Life, please contact the Respect Life Social Justice Office for availability at 316-269-3935 or [m4linfo@catholicdioceseofwichita.org](mailto:m4linfo@catholicdioceseofwichita.org).

Some partial scholarships are available – contact the office for details. Register online at: <https://thevine.leadlms.com/register/group/190>

**Save the Date, BINGO:** Mark your calendars for Sat, Feb 28, 2026. 6-9pm. Join for a Spring Picnic themed BINGO Fundraiser supporting the Pure & Simple Truth for Youth mission of empowering this generations youth with the truth about identity, healthy relationships, and sexual integrity. Early bird registration begins, January 1, 2026, [www.pst4y.org](http://www.pst4y.org)

**Catholic Charities:** Help fill Santa's workshop! As you shop this season. Remember the families staying at Harbor House and St. Anthony Family Shelter.

Donate Online: [bit.ly/CatholicCharitiesWishlist](http://bit.ly/CatholicCharitiesWishlist) or [bit.ly/ChristmasatCCW2025](http://bit.ly/ChristmasatCCW2025)

**Lolek Theatre:** Come see the The Wizard of Oz at Bishop Carroll Auditorium on Dec 4-5 at 7pm and Dec 6 at 2pm. Tickets on sale now at [lolekwichita.com](http://lolekwichita.com)

**NFP:** Contact the Catholic Diocese at 316-685-5240 Or find available classes at: [www.catholicdioceseofwichita.org/mfl/nfp](http://www.catholicdioceseofwichita.org/mfl/nfp)

Victim Assistance Coordinator | P: (316) 440-1757  
Catholic Diocese of Wichita / 424 N. Broadway, Wichita KS 67202

**Garden Plain State Bank**  
10526 W. Maple • Wichita, KS  
721-1500  
voice access: 462-1300  
www.gpsbank.com

**Downing & Lahey**  
MORTUARY • CREMATORY  
10515 W Maple • 773-4553 • www.dwlchita.com  
♦♦ Serving the Wichita Community Since 1913 ♦♦

**WEBB-SHINKLE MORTUARY**  
Local Family Owned  
Clearwater and Haysville  
620.584.2244  
www.wsmortuary.com

**2026 Catholic Calendar**  
Fill every month with faith!  
Order Yours Today! >



**Affordable CREMATIONS PLUS**



**Star Lumber & Supply**  
Maple & West Street  
316.942.2221  
Greenwich & K96  
316.636.2800  
Lumber • Flooring • Windows • Decks • Doors • Cabinets • Siding

**Driveways, Sidewalks, Patios, Porches, Stamped Concrete or Any Concrete Flat Work**  
10% Discount off Decorative Border



**HEARTLAND VETERINARY SERVICES, INC.**  
Chad Hommertzhain, DVM • Elizabeth Allinger, DVM  
Tyler Rudy, DVM • Shannon Davis, DVM  
2800 N. 247th West, Andale, KS  
316-444-2377  
SMALL ANIMAL • EQUINE  
DAIRY & BEEF CATTLE  
MEDICINE & SURGERY

**Patrick's Plumbing Service LLC**  
316-779-6869  
"You Need Help? - Call Patrick NOW.  
Fast, Affordable, Dependable."

**Sassy Nails Salon & Spa**  
316.721.6245 f /SassyNailsWest  
13303 W. Maple St. Ste 125 • Wichita, KS 67235  
Mon - Sat: 9:30AM - 7PM Sun: 12PM - 5PM  
Gift Certificate Available. Walk-ins Welcome

**DUKE'S Lawn Care Inc.**  
Services Provided:  
Lawn Fertilizing • Seeding  
Bagworm Spray  
**Duke and Jen Meyers**  
Members of St. Peter Parish  
(316) 721-7811 • jen@dukeslawn.com

**D&D EQUIP. SALES & RENTALS**  
4260 S. WEST ST. • 316.522.6272 • WICHITA, KANSAS

**LET'S GROW YOUR BUSINESS**  
Place Your Ad Here  
and Support Our Parish!  
**CONTACT ME Tim NeSmith**  
tnesmith@4LPI.com • (800) 950-9952 x5863

**DR. JARED REICHENBERGER  
DR. LISA METZEN**  
**EAGLE RIDGE DENTAL**  
10243 W. 21st St N., Ste. 101  
Wichita, KS 67205  
(316) 295-2858  
office@eagleridgedental.com  
www.EagleRidgeDental.com

**B&B LUMBER**  
Cedar Fence • Lumber  
Hardware • Cabinets  
Across the street from St. Peter's  
10808 W. MacArthur Road  
522-1522

**WIESEN ROOFING**  
ROOFING • WATERPROOFING • GUTTERS & LANDSCAPING  
Brad Wiesen • Owner  
503 N. Wheatland Pl. • Wichita  
(316) 806-2106 • www.wiesenroofing.com


Like a good neighbor, State Farm is there.\*  
**Jim Morgan**  
13303 W. Maple Street  
Wichita, KS 67235  
(316) 721-5769  
jim@insurewichita.net  
Get suprisingly great Home & Auto Rates

You know I'm always here with Good Neighbor service. But I'm also here with surprisingly great rates for everyone. Call me for a quote to see how much you can save. You might be surprised.

**State Farm**  
State Farm  
Bloomington, IL 2001875

**BRIGHAM PHYSICAL THERAPY**  
Kelsie Brigham  
316-866-7067  
1443 N Ridge Rd, Wichita

**WHERE CRAFTSMANSHIP MEETS INTEGRITY**  
AT SHARPLINE, QUALITY, HONESTY, AND HARD WORK STILL MEAN SOMETHING. MORE THAN A BUSINESS, IT'S A COMPANY THAT CARES ABOUT ITS PEOPLE, ITS CUSTOMERS, AND THE WORK IT PUTS INTO THE WORLD.



**APPLY TODAY: SHARPLINE.COM**

**CHEMSTATION**  
**BLAKE SIMMONS**  
CHEMICAL SOLUTIONS SPECIALIST  
bsimmons@chemstation.com  
chemstation.com  
2211 S EDWARDS ST. WICHITA, KS 67213  
1 800.664.4188  
316.201.1851  
865.312.1825

**Harry Street Carpet, LLC**  
FAMILY OWNED & OPERATED SINCE 1950  
RESIDENTIAL • COMMERCIAL  
211 WEST HARRY • WICHITA, KS 67213  
PH: (316) 262-7715

**LEGACY BANK PERSONAL LOANS**  
Katie Halford  
Kim Bugner  
www.LegacyBank (316) 206-3711 Member FDIC

**D&S Body Shop**  
Owner: Steve Stonehocker  
Body and Paint Repair  
Restoration of old and vintage cars.  
104 W. 140th Ave. N. • Clearwater • 620.584.2479

**Don't just dream it, SEE IT**  
**PHOENIX SUPPLY INC.**  
Kitchen & Bath Showroom  
262-7241 • phoenixsupplyinc.com

**DAVID LIES PLUMBING INC.**  
945-0117

**OPEN SUNDAYS**  
11200 W. KELLOGG  
722-7516  
Est. 1952  
**Brady Nursery**  
LANDSCAPING WITH A PLAN  
www.bradynursery.com

**SUPPORT OUR PARISH**

**SUPPORT OUR ADVERTISERS!**

Let us be family  
**FAMILY HEALTH & REHAB**  
For your short stay rehab or long term care  
Improving Lives. Exceeding Expectations  
639 South Maize Road Court, Wichita, KS • Phone: 316.425.5600

**IF YOU LIVE ALONE**  
**MDMedAlert!**™ As Low As \$19.95/mo.  
✓ Ambulance/Police  
✓ Family/Friends  
✓ GPS & Fall Alert  
CALL NOW 800.808.9294  
md-medalert.com

**Detmer Family DENTISTRY**  
detmerfamilydentistry.com  
3965 N. Maize Rd • Maize, KS  
(316) 721-8100  
MIL. CARE & IMMIGRANT VISA DETECTIVE

**MEDICARE MEDIC JIM ZUPERKU**  
Parishioner  
Specializing in All Medicare Choices  
Free Analysis  
PHONE 316-773-1220  
CELL 316-253-7340  
jzuperku@gmail.com  
www.medicarekansas.com

**mary kate AND COMPANY**  
721-4101  
HAIR SALON

**BRAND PLUMBING, INC**  
Residential • Commercial • Repair  
316-942-2306  
www.brandplumbinginc.com  
Lic # 1440 1894 2370

**CENTRAL GAS SERVICE**  
Serving Sedgewick County Since 1948  
P.O. Box 35-1, Garden Plain  
Chase Lehner  
316-772-3783  
centralgasservice@outlook.com

**Lubbers**  
The Friendly Way to Buy!  
LubbersCars.com 800.LUBBERS 540.0011 Cheney, KS

**ADT-Monitored Home Security**  
Get 24-Hour Protection From a Name You Can Trust  
• Burglary • Flood Detection  
• Fire Safety • Carbon Monoxide  
833-287-3502

**GODDARD VETERINARY CLINIC**  
SMALL ANIMALS MEDICINE & SURGERY • BOARDING  
JOSHUA ALBERG, D.V.M. • SHIP KOSTER, D.V.M.  
19912 W. KELLOGG DR. GODDARD, KS 67052  
(316) 794-8022

**NORDHUS DENTISTRY**  
Byron J. Nordhus, D.D.S.  
721-6730  
No Dental Insurance? No Problem!  
View our membership plan at www.nordhusdentistry.com

**Edward Jones**  
**Joe Metzner**  
Financial Advisor  
Parishioner  
• Planning for Retirement  
• College Savings  
• Business Retirement Plans  
316-722-1041  
315 S Maize Road • Wichita, KS 67209  
www.edwardjones.com/joe-metzner

# **Liturgical Ministries**

## **December 6-7, 2025**

### Pre-Mass Rosary:

4pm - Tom Dreiling  
8am - Danielle Rios  
1030am - David Nelson

### Lector/Commentator:

4pm - Betty Hunt/Jack Snyder  
8am - Bob Robben/Ron Dillner  
1030am - Doug Patry/Beth Orth-Voegeli

### EMHC:

4pm - Ben Cott/Judy Cott/Vicki Richuber  
8am - Tony Brandt/Kelly Brandt/Bo Newell  
1030am - Bill Martin/Anne Martin/  
Tasha Denton

### Offertory:

4pm - David Fox Family  
8am - Dallas Mies Family  
1030am - Shawn Whiteker Family

### Ushers:

4pm - Kenny Everett/Juan Larin/Jim  
Bevilacqua/Tom Butherus/  
David Carson/Tom Dreiling  
8am - Juan Rios/Tom Peterson/John Thome/  
Tyler Ummel/Jimmy Allen/  
Chris Baalman  
1030am - Cody Denton/Samir Manun/  
Hayden Pfeiffer/Michael Scheer/  
Levi Sponsel/Ryan Sponsel

### Altar Servers:

4pm - Alex Roberts/Parker Thome  
MC: Isaias Larin  
8am - Hudson Hatcher/Allison Becker  
MC: Ben Brandt  
1030am - Dalton Goertz/Brady Huff  
MC: Dominic Martin

### Accompanist/Cantor:

4pm - Michelle Baalman/Thuyahn Vo  
8am - Betty Hunt/Theo Sponsel  
1030am - Choir

Please follow the cantor/accompanist schedule sent out separately by Mike Sanders should it not match the above.

## Upcoming Mass Intentions

### Saturday, November 29

4:00 pm

✠ JF Masterson

### Sunday, November 30

8:00 am

✠ Roger Robben

10:30 am

The People of the Parish

### Tuesday, December 2

8:00 am

✠ Kaleb Kean

### Wednesday, December 3

8:00 am

✠ Raymond Youngers

### Thursday, December 4

8:00 am

✠ Anita Jackson

### Friday, December 5

8:00 am

✠ Gary Martin

### Saturday, December 6

4:00 pm

Hannah Palmer

### Sunday, December 7

8:00 am

✠ Jan Born

10:30 am

The People of the Parish

## **Weekday Altar Servers**

*Dec 2-3: Dalton Goertz (MC); Caroline Munn, Julissa Larin*

*Dec 4: Dalton Goertz (MC), Caroline Munn, Hattie Stuhlsatz*

*Dec 5: Knox Hanes (MC), Caroline Munn, Hattie Stuhlsatz*

### **Lector**

*Dec 2: Sophia Whiteker (Rd1), Dorian Plummer (Resp)*

*Dec 3: Liam Sponsel (Rd1), Sophia Whiteker (Resp)*

*Dec 4: Kinley Zoglmann (Rd1), Arely Valles (Resp)*

*Dec 5: Cora Toon (Rd1), Kinley Zoglmann (Resp)*

**Notice: Early Bulletin Submission thru the end of the year.**

### **TREASURE REPORT**

**For Fiscal Year 7/1/25 - 6/30/26**

**November 2025 Gifts**

Weekly Budget.....\$55,012.00  
Regular Offerings 11/16/2025.....\$87,153.20  
Current Year Balance.....\$170,276.66

#### **Capital Outlay**

Pink Envelopes 11/16/2025.....\$312.00  
Monthly Total.....\$3,477.00  
Year Total.....\$20,770.00

**Due to early Bulletin Submission Nov 23 totals will appear in Dec 7 Bulletin.**